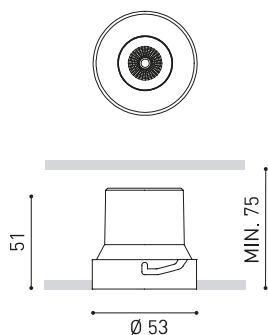


DIMENSIONES



ACCESORIOS



TRIMLESS ACCESSORY
(MANDATORY)



TRIMLESS TOOL

| | |
|------------|---------------------------------------|
| Nombre | SHOT LIGHT S TRIMLESS FLOOD 2700K NMG |
| Referencia | A4630110NMG |
| Color | Negro-Oro metalizado |
| RAL | Acabado metalizado |
| Categoría | CEILING RECESSED |

PRODUCTO

FUENTE DE LUZ

Tipo

LED

Flujo Luminoso

640 lm

Temperatura de color

2700 K

Estabilidad cromática

MacAdam Step 2

Índice de reproducción cromática

CRI >90

Potencia

6 W

Corriente

500 mA

Eficacia

107 lm/W

Horas de Vida del LED

L80B10 >60.000h

LUMINARIA | DATOS FOTOMÉTRICOS

Eficiencia Lumínica

89%

Ángulo del haz de luz

40°

LUMINARIA | DATOS ELÉCTRICOS

Driver

Incluido - Conectado

Potencia del sistema

7,17 W

Tensión

220V/240V

Frecuencia

50/60 Hz

Regulación

No Dim - Otros DIM, consultar

Clase de seguridad eléctrica

OTROS DATOS

Estanqueidad

IP20

Control inalámbrico

Consultar

Alimentación de emergencia

Consultar

Medidas de empotramiento

Ø59 mm

Peso

110 g

Peso con embalaje

155 g

Dimensiones embalaje

86 x 86 x 75 mm

Unidades por embalaje

1

Materiales

Aluminio / Acrilonitrilo Butadieno Estireno / Policarbonato



Una luminaria concebida para ser un discreto punto de luz en el techo que oculta a la vista el origen de la iluminación y busca ofrecer el máximo confort visual. Para ello, está provisto de una pantalla antideslumbramiento y un micro-reflector (diseñado específicamente) que genera un haz de luz perfectamente definido.

DIAGRAMA POLAR

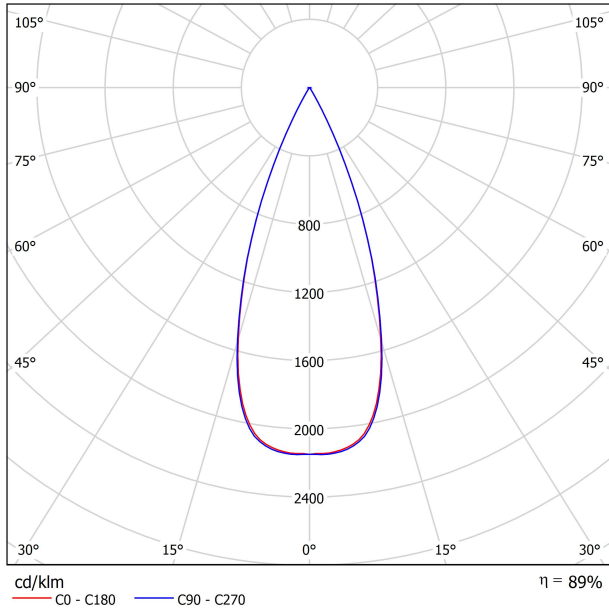
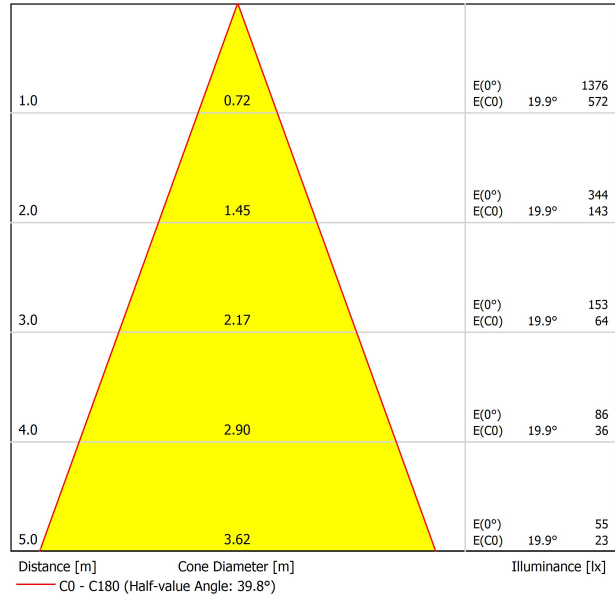


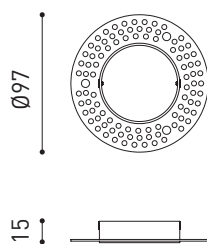
DIAGRAMA CÓNICO



UGR

| Glare Evaluation According to UGR | | | | | | | | | | | | |
|--|-----|--|------|------|------|------|---|------|------|------|------|----|
| ρ Ceiling | | 70 | 70 | 50 | 50 | 30 | 30 | 70 | 70 | 50 | 50 | 30 |
| ρ Walls | | 50 | 30 | 50 | 30 | 30 | 30 | 50 | 30 | 50 | 30 | 30 |
| ρ Floor | | 20 | 20 | 20 | 20 | 20 | 20 | 20 | 20 | 20 | 20 | 20 |
| Room Size X Y | | Viewing direction at right angles to lamp axis | | | | | Viewing direction parallel to lamp axis | | | | | |
| 2H | 2H | -4.7 | -4.1 | -4.5 | -3.9 | -3.7 | -4.6 | -3.9 | -4.3 | -3.7 | -3.5 | |
| | 3H | -1.4 | -0.8 | -1.1 | -0.6 | -0.4 | -1.1 | -0.5 | -0.8 | -0.3 | -0.1 | |
| | 4H | 0.7 | 1.2 | 1.0 | 1.5 | 1.7 | 0.9 | 1.4 | 1.2 | 1.7 | 1.9 | |
| | 6H | 2.7 | 3.2 | 3.1 | 3.5 | 3.8 | 3.0 | 3.5 | 3.3 | 3.8 | 4.1 | |
| | 8H | 3.8 | 4.2 | 4.1 | 4.5 | 4.8 | 4.2 | 4.7 | 4.5 | 4.9 | 5.2 | |
| 4H | 12H | 5.1 | 5.6 | 5.5 | 5.9 | 6.2 | 5.6 | 6.0 | 5.9 | 6.3 | 6.6 | |
| | 2H | -3.7 | -3.2 | -3.4 | -2.9 | -2.7 | -3.6 | -3.1 | -3.3 | -2.8 | -2.6 | |
| | 3H | -0.0 | 0.4 | 0.3 | 0.7 | 1.0 | 0.2 | 0.6 | 0.5 | 0.9 | 1.2 | |
| | 4H | 2.1 | 2.5 | 2.5 | 2.8 | 3.2 | 2.3 | 2.7 | 2.6 | 3.0 | 3.3 | |
| | 6H | 4.4 | 4.7 | 4.8 | 5.1 | 5.4 | 4.6 | 4.9 | 5.0 | 5.3 | 5.7 | |
| 8H | 8H | 5.5 | 5.8 | 5.9 | 6.2 | 6.6 | 5.9 | 6.2 | 6.3 | 6.6 | 7.0 | |
| | 12H | 7.0 | 7.3 | 7.4 | 7.7 | 8.1 | 7.4 | 7.7 | 7.8 | 8.1 | 8.5 | |
| | 4H | 3.0 | 3.3 | 3.4 | 3.7 | 4.1 | 3.1 | 3.4 | 3.5 | 3.8 | 4.2 | |
| | 6H | 5.5 | 5.7 | 5.9 | 6.1 | 6.6 | 5.7 | 5.9 | 6.2 | 6.3 | 6.8 | |
| | 8H | 6.8 | 7.0 | 7.3 | 7.4 | 7.9 | 7.1 | 7.3 | 7.6 | 7.7 | 8.2 | |
| 12H | 12H | 8.5 | 8.7 | 9.0 | 9.1 | 9.6 | 8.9 | 9.0 | 9.3 | 9.5 | 10.0 | |
| | 4H | 3.3 | 3.5 | 3.7 | 3.9 | 4.3 | 3.4 | 3.6 | 3.8 | 4.0 | 4.4 | |
| | 6H | 5.8 | 6.0 | 6.3 | 6.5 | 6.9 | 6.0 | 6.2 | 6.5 | 6.6 | 7.1 | |
| 8H | 7.3 | 7.4 | 7.8 | 7.9 | 8.4 | 7.6 | 7.7 | 8.0 | 8.2 | 8.7 | | |
| Variation of the observer position for the luminaire distances S | | | | | | | | | | | | |
| S = 1.0H | | +1.4 | -0.5 | | | | +1.2 | -0.4 | | | | |
| S = 1.5H | | +2.8 | -0.7 | | | | +2.6 | -0.7 | | | | |
| S = 2.0H | | +4.3 | -1.0 | | | | +4.0 | -1.0 | | | | |
| Standard table Correction Summand | | --- | | | | | --- | | | | | |
| Corrected Glare Indices referring to 640lm Total Luminous Flux | | | | | | | | | | | | |

MANDATORY FOR INSTALLATION

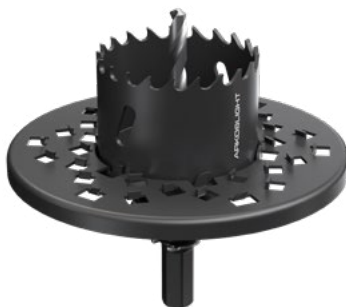


| PRODUCT | |
|-----------|---------------------------------|
| Model | Shot Light S Trimless accessory |
| Reference | A4630000 |
| Material | Iron |
| Coating | Zinc plated |
| Category | Accessories |



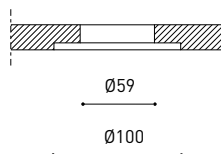
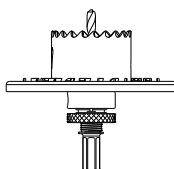


INSTALLATION GUIDE

https://youtu.be/sa_xAgj4ji4

PRODUCT

| | |
|-----------|------------------------------------|
| Model | Trimless Tool D59 X D100 MM |
| Reference | A478-00-03 |
| Category | Accessories |





Fuente de luz (LED) reemplazable por un profesional autorizado
 Replaceable (LED only) light source by an authorized professional.
 Source lumineuse (LED) remplaçable par un professionnel agréé
 Sorgente luminosa (LED) sostituibile da parte di un professionista autorizzato
 Austauschbare (LED) Lichtquelle durch einen autorisierten Fachmann



Equipo de control reemplazable por un profesional autorizado
 Replaceable control gear by an authorized professional
 Dispositif de commande remplaçable par un professionnel agréé
 Alimentatore sostituibile da parte di un professionista autorizzato
 Auswechselbares Betriebsgerät durch autorisierten Fachmann

INSTRUCCIONES PARA EL FINAL DE VIDA Y LA ELIMINACIÓN LOS COMPONENTES
 INSTRUCTIONS ON END-OF-LIFE AND COMPONENT DISPOSAL
 INSTRUCTIONS POUR LA GESTION DES COMPOSANTS EN FIN DE VIE ET LEUR MISE AU REBUT
 ISTRUZIONI PER IL FINE VITA E LO SMALTIMENTO DEI COMPONENTI
 ANWEISUNGEN ZUR ENTSORGUNG DER LEUCHTENKOMPONENTEN



Interrumpir la alimentación del aparato
 Cut the power supply to the luminaire
 Couper l'alimentation du luminaire
 Interrompere l'alimentazione dell'apparecchio
 Stromversorgung der Leuchte unterbrechen



Quitar la(s) fuente(s) de luz para el desecho
 Remove light source(s) for disposal
 Retirer la (les) source(s) lumineuse(s) pour l'élimination
 Rimuovere la/le sorgente/e di luce per lo smaltimento
 Lichtquelle(n) zur Entsorgung entfernen



Quitar la batería para el desecho
 Remove the battery for decommissioning
 Retirer la batterie pour sa mise au rebut
 Rimuovere la batteria per la dismissione
 Die Batterie ordnungsgemäß entsorgen



Quitar el equipo de control para el desecho
 Remove control gear for disposal
 Retirer le dispositif de commande pour l'élimination
 Rimuovere l'alimentatore per lo smaltimento
 Betriebsgerät zur Entsorgung ausbauen

Enviar los materiales a un centro de recogida RAEE
 Send the materials to a WEEE collection centre
 Envoyer les matériaux dans une déchetterie DEEE
 Inviare i materiali ad un centro di raccolta RAEE
 Die Materialien in einem WEEE-Zentrum entsorgen

